

Ground Floor

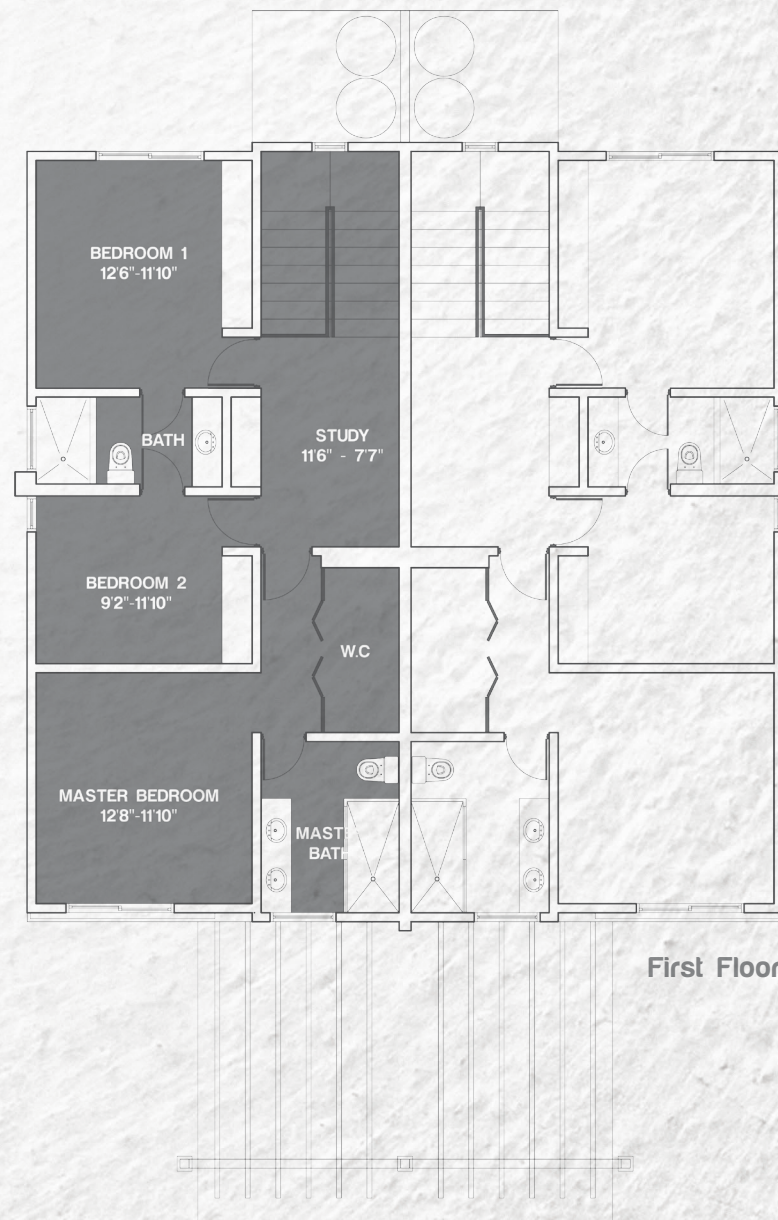
## Townhouse Features

- 1500 sf townhouse
- Roof Deck 720 sf
- 3 bedrooms 2 1/2 bathrooms
- Tiled living spaces
- Modern kitchen & solid surface countertop
- Kitchen appliances
- Split air conditioning system
- Modern Bathroom vanities & fixtures

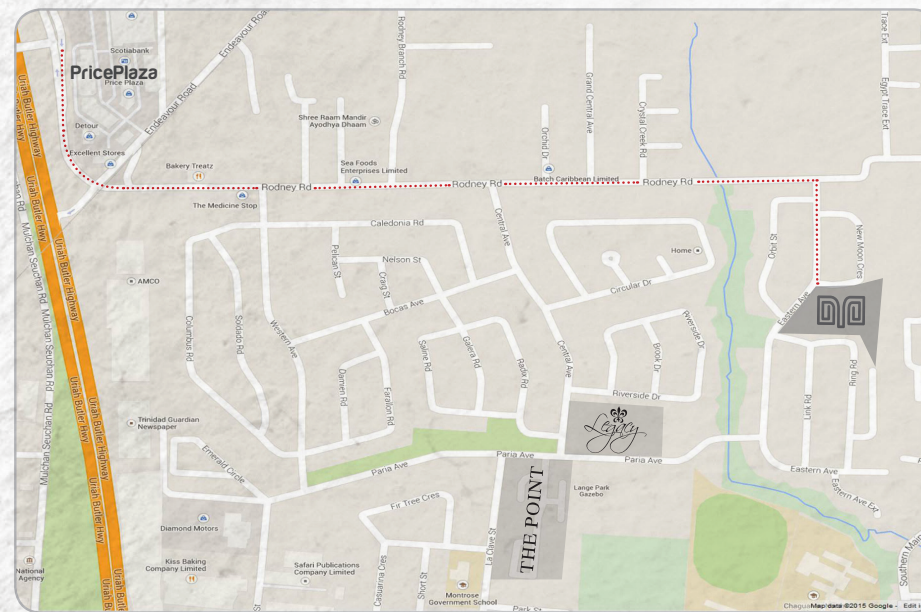
## TOWNHOUSE

3 BEDROOM - 2 1/2 BATH

Townhouse Area: 1,500 sf  
Roof Deck Area: 720 sf  
**Total Area: 2,220 sf**



First Floor



## Community Amenities

- Gated compound
- 34 Townhouses
- 2 Parking spaces per unit
- Visitor parking
- Underground electrical supply
- Landscaped common areas

## Our Projects

THE POINT  
at Lange Park



LANGE HOLDINGS LIMITED

HSMDT  
**HomeSolutionsTT.com**

#9 O'Connor Street, Woodbrook, Port of Spain, T&T, WI.  
Tel: 1 868-6232257



Preliminary floor plans and specifications are for preview purposes only. Dimensions, specifications and layouts shown are approximate and subject to change. The developer reserves the right to alter or improve without notice. Oral representations cannot be relied upon as correctly stating the representation of the Developer. For correct representations please make reference to the purchase agreement.

Preliminary floor plans and specifications are for preview purposes only. Dimensions, specifications and layouts shown are approximate and subject to change. The developer reserves the right to alter or improve without notice. Oral representations cannot be relied upon as correctly stating the representation of the Developer. For correct representations please make reference to the purchase agreement.

# Montrose place

*at Lange Park*





Preliminary floor plans and specifications are for preview purposes only. Dimensions, specifications and layouts shown are approximate and subject to change. The developer reserves the right to alter or improve without notice. Oral representations cannot be relied upon as correctly stating the representation of the Developer. For correct representations please make reference to the purchase agreement.